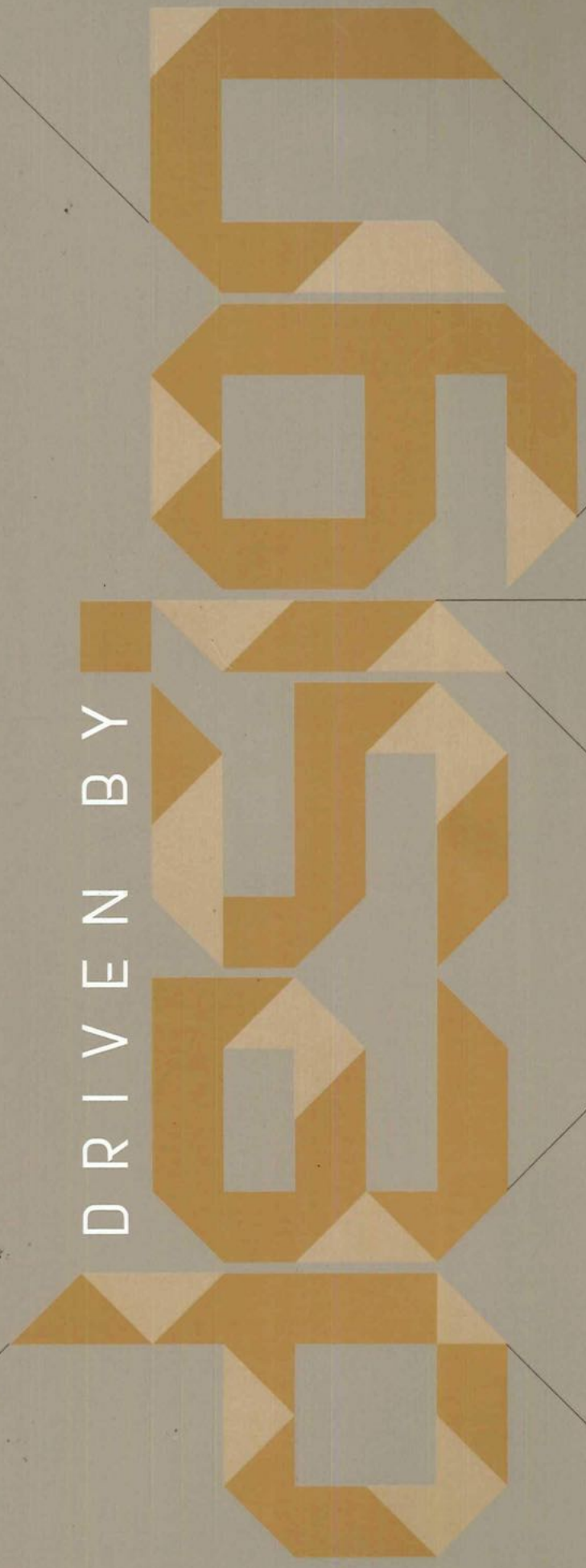


SINGAPORE \$8 MALAYSIA RM18 HONGKONG HKD90 AUSTRALIA AU\$14.95 OTHERS US\$12

d+a[®]

design and architecture
www.designandarchitecture.com

DRIVEN BY

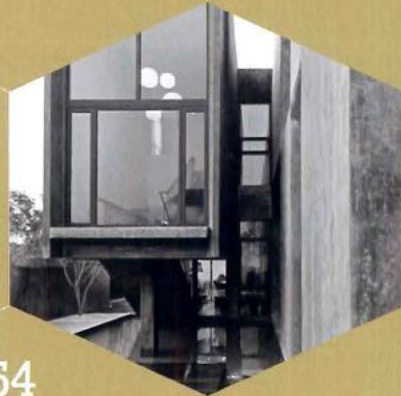


2014/2015 | S\$8



8 CODA: collaborative office
of design & architecture

4
INTRODUCTION



16
czarl architects

24
farm

34
four

40
fdat

54
genome architects

kite studio architecture

70
lekker architects

86
makk architects

62

78
meta studio

92
ong & ong
experience design

106
red bean architects

114
studiogoto

124
studio bikin

100
plystudio

fabian tan
architects

162
v:dro (port25)

132
studio sklim

138
studio xmsl



155
tetawowe atelier

146
seshan design

d+a

editor
Thio Lay Hoon

project editor
Elaine Lee

art director
Kevin Wong

designer
Khaili Teoh

associate business director
Douglas Lee

associate manager (business development)
Darran Ong

executive (marketing & communications)
Loke Pei Ling

publisher
Foo Mei Siah

associate director (business development)
Kelen Koh

creative director
Aris Lai

operations manager
Emmeline Lee

editorial email: da-ed@key-editions.com

advertising email: enquiry@key-editions.com

subscriptions email: subscription@key-editions.com

d+a is published by
Key Editions Pte Ltd
20 Bedok South Road Singapore 469277
Tel: (65) 6445 3313 Fax: (65) 6445 3373
Email: info@key-editions.com
Business Registration No. 200005022G

Printer & Colour Separation:
KHL Printing Co. Pte Ltd
57 Loyang Drive Singapore 508968
Tel: (65) 6543 2222 Fax: (65) 6545 3333
Business Registration No. 197801823M

Distributor (Singapore): MediaCorp Pte Ltd
Distributor (Malaysia): Pansing Marketing Sdn Bhd

The publisher will not be responsible for unsolicited manuscripts, illustrations or photographs. All rights reserved by the publisher. Copyright © Key Editions pte ltd. Reproduction in any form of editorial content is prohibited.

www.keyeditions.com

studio bikin

www.studiobikin.com



124

Studio Bikin was founded between partners **FARAH AZIZAN** (above, right) and **ADELA ASKANDAR** in Kuala Lumpur, Malaysia in 2012. The design-led studio practice is established to enable both partners and their team to design and execute projects with a broad range of typologies, from office interiors to private dwellings in various settings, from the urban to rural context.

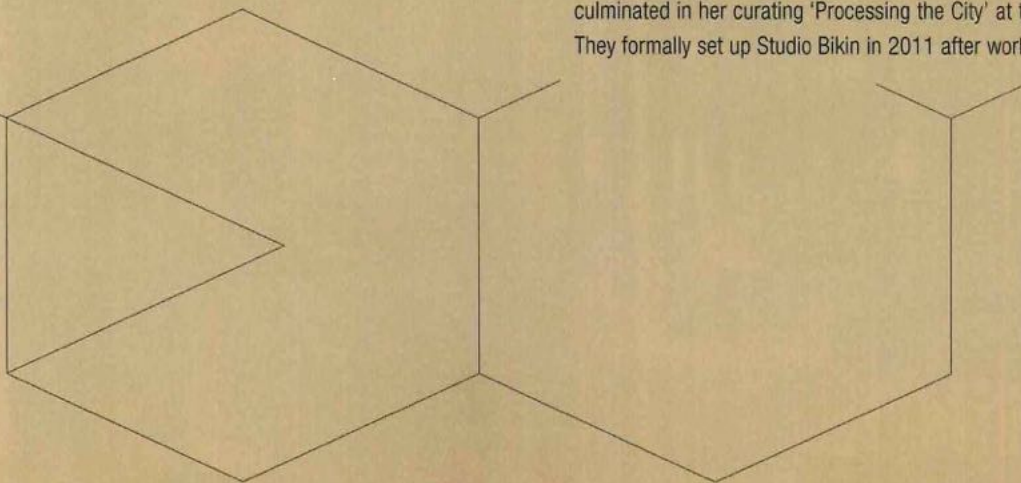
Studio Bikin is passionate about design and assumes a very hands-on approach on all their projects, valuing craftsmanship, detail and sensitivity towards the context and environment within which they build. These values are intrinsic to their design process.

The resulting work reflects their approach thus increasing the studio's range of commissions to boutique hospitality and landscaping. The studio looks forward to developing exciting briefs with their clients, deepen their level of play and research within each project and continue its growth within the field of design and architecture.

biography

FARAH AZIZAN (born 1978, Kuala Lumpur) obtained her BA in architecture at Nottingham University, UK and pursued her diploma in Architecture at the Architecture Association, London. Upon graduating in 2004, she worked for Tonkin Liu Architects, returned reluctantly to Kuala Lumpur and joined Seksan Design where she practised landscape and architectural design for 6 years. Her key projects are Lone Pine, One Menerung, Sekeping Kong Heng, Resort @ Luang Prabang and PJ Trade Centre. Apart from working with Seksan Design, Farah has been involved in teaching as guest critics to several local architecture schools. She has created a few installations, namely Kursi Lapuk in the exhibition 'Processing the City', neon light installations in 'The Last Call', the Bombay Sapphire project with VWFA and her bottle-light installations in 'The Light Show' which she co-curated with Carolyn Lau and Lisa Foo. In 2011, she set up Studio Bikin with Adela Askandar.

ADELA ASKANDAR (born 1974, Penang) received her BA and masters in architecture from University of Cambridge, United Kingdom in 2002. Upon completion of her Part II in 2000, she worked at Lisa Shell design, a small architectural practice in London for 2 years, after which she gained her RIBA Part III qualification. These formative years in an intense studio-based set up allowed her to dabble in all aspects of practice, after which she returned to Malaysia and joined Unit One design consultancy in Kuala Lumpur in 2003. Amongst notable projects are the Leisure Farm Villas, Johor (winner of the 2009 WAN international residential awards) and Love Lane, Penang (winner of PAM 2006 Adaptive Reuse awards). She then set up as a sole practice, Adela Askandar design (a.a.d.) in 2006. Adela also taught alongside practice, at the Department of Architecture in University Malaya as a design tutor and in other local architecture schools as guest critic. She enjoyed collaborations with other designers including Farah, which also culminated in her curating 'Processing the City' at the Central Market Annexe in 2007. They formally set up Studio Bikin in 2011 after working together on a few projects. ▷



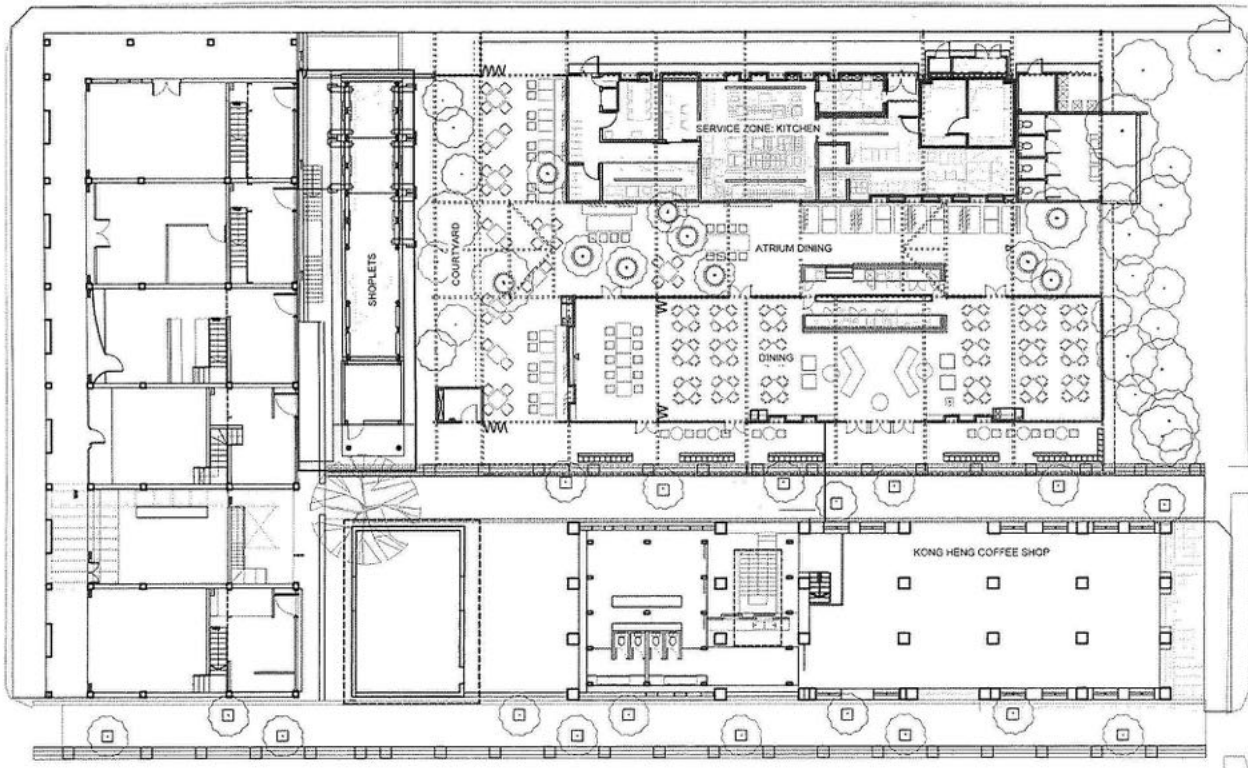
plan b @ kong heng, ipoh

PHOTOGRAPHY BY ADELA ASKANDAR

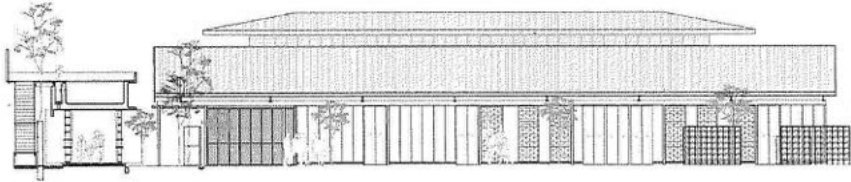
client Ben's Kitchens Sdn Bhd
design team Adela Askandar, Farah Azizan, Loo Jie Hsin
main contractor Shen Chuan Renovation Works
m&e Tekun Perunding Sdn Bhd
built area 7,885ft²
completion 2013

The starting point for this project was a 7,885ft² disused furniture warehouse that was in the vicinity of the Sekeping Kong Heng, next to the famed local Kong Heng coffee shop in Ipoh old town. The brief was to transform the space into a restaurant for the local chain, Plan B. We wished to maintain the existing steel superstructure of the original warehouse as it articulated the space in a powerful way in its bare state. We restrained the building works to the bare minimum, by keeping the linear central jacked roof clear of interventions. Instead, we inserted a more solid block that housed the services on one side and a more transparent block one housing the

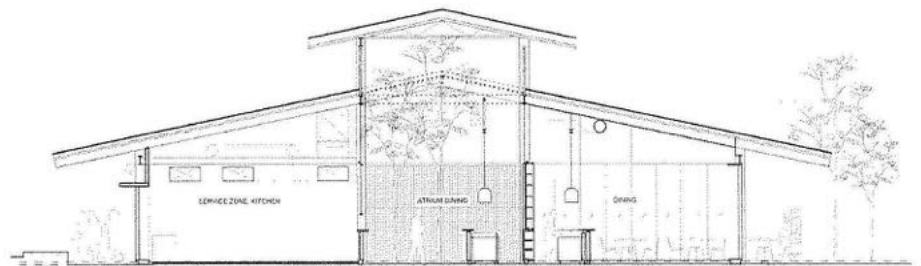




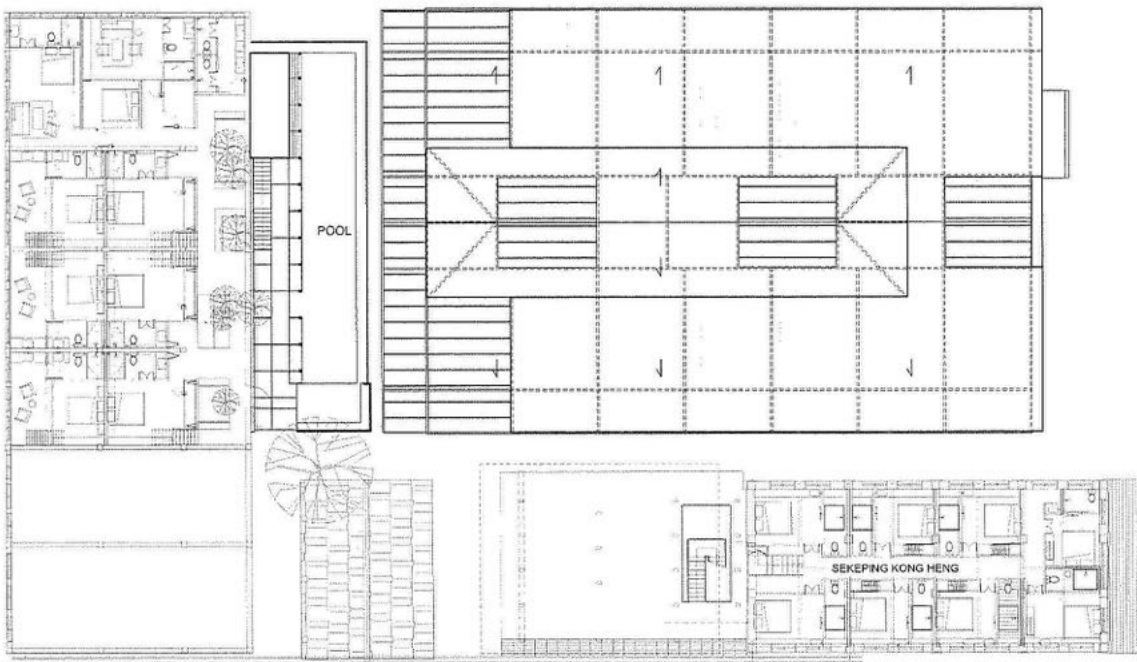
SITE PLAN



ELEVATION A



CROSS SECTION



ROOF PLAN

air-conditioned dining area on the opposite side, all within the outline formed by the steel structure. The entrance is defined by the bar that has two sides, one facing 'inside', (the airconditioned dining area), the other facing 'outside', the naturally ventilated jacked roof area where we introduced planting and called the 'atrium dining' area. The end of the warehouse faced another development which housed the raised pool structure accessible by Sekeping Kong Heng hotel guests, and the space in between the two was buffered by planting of trees, which we called the 'courtyard'.

*Featured in D+A issue 079 ('OLD SPACE NEW VOLUMES')

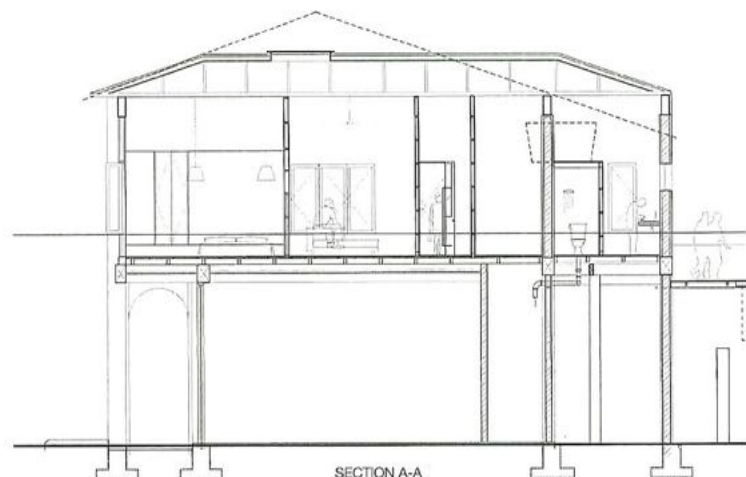
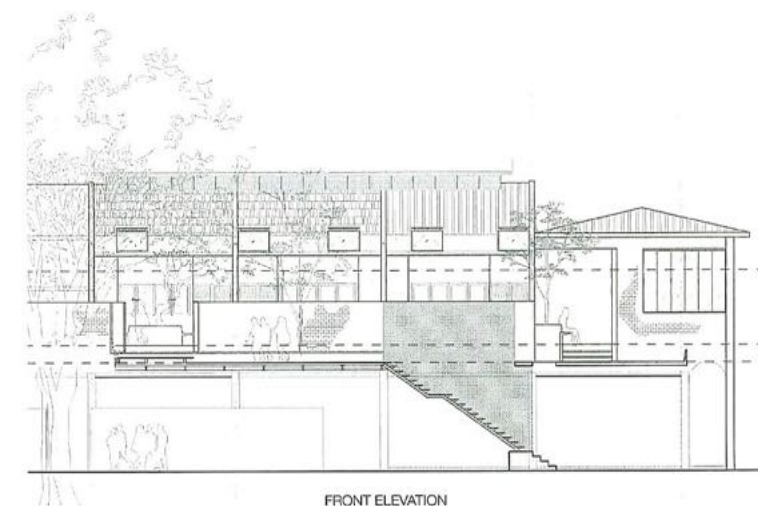


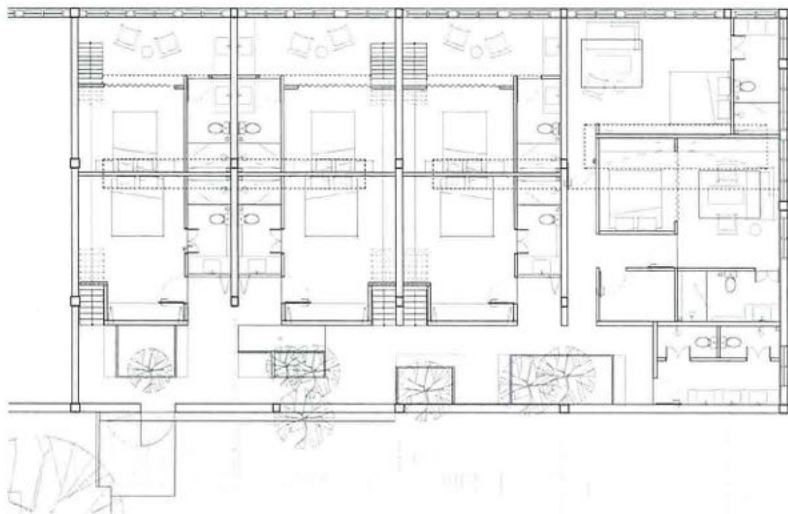
pool & shoplets @ kong heng, ipoh

PHOTOS BY JAY SIM AND LIM CHONG YEW

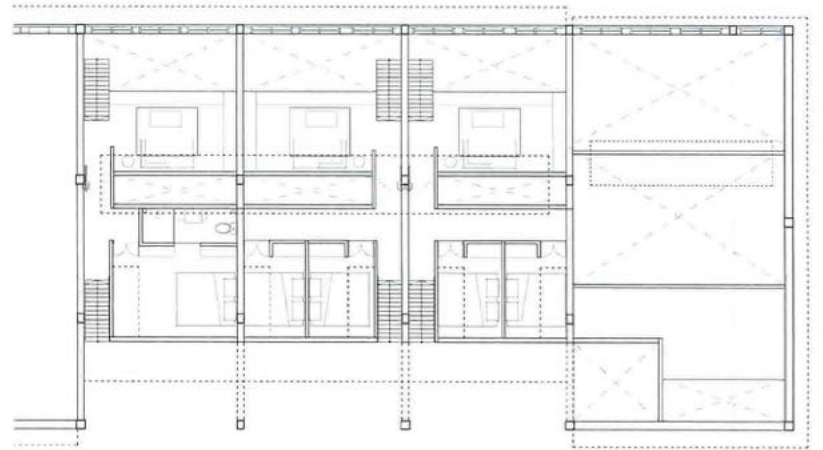
client Sekeping Kong Heng
design team Adela Askandar, Farah Azizan, Loo Jie Hsin
main contractor Shen Chuan Renovation Works
m&e Tekun Perunding Sdn Bhd
completion 2013

The Kong Heng development is evolving, and Studio Bikin's Plan B project scope was expanded by the addition of a raised pool structure with shoplets below, commissioned by Sekeping Kong Heng owners for the use of hotel guests. The elevated pool is insitu concrete, raised on steel legs. Its underbelly forms the space that was layered with pivoting door-shelves of expanded steel mesh that transforms the space into shoplets. Currently these are brought to life with vintage & craft shops that open each weekend, and interact with the restaurant space via the courtyard.

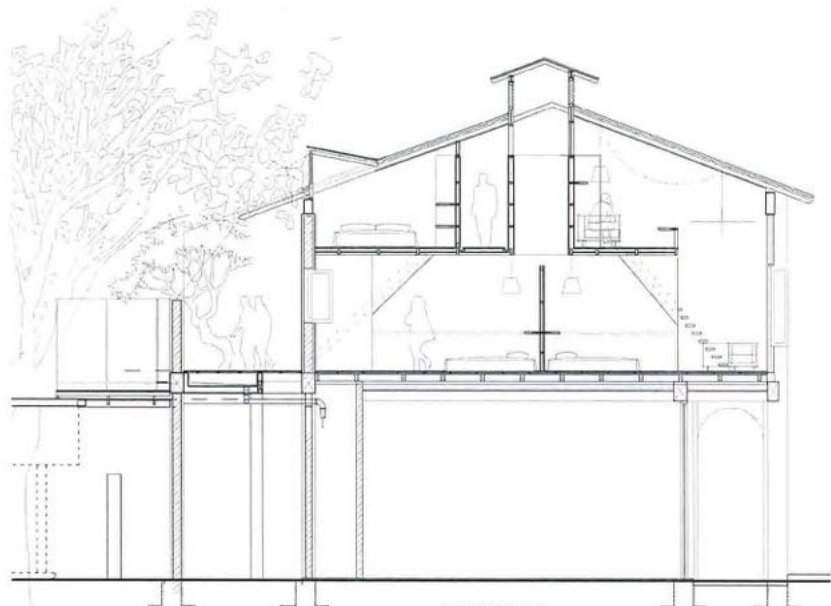




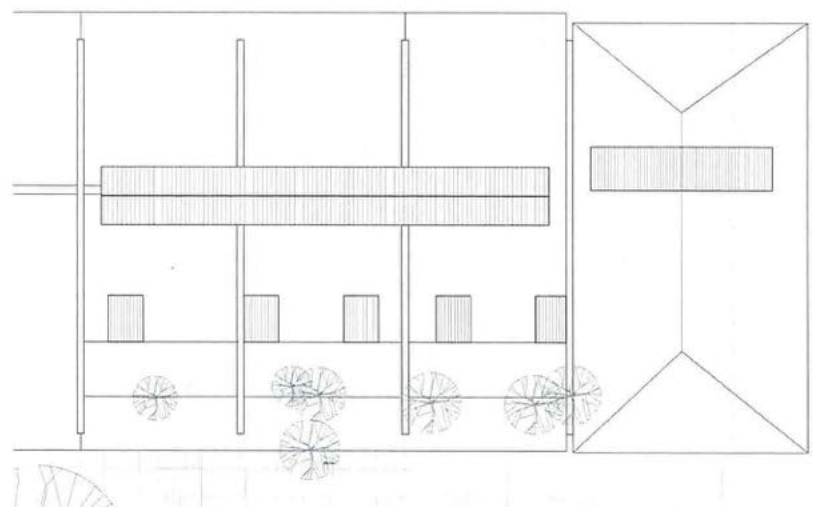
FIRST FLOOR PLAN



MEZZANINE FLOOR PLAN



SECTION B-B

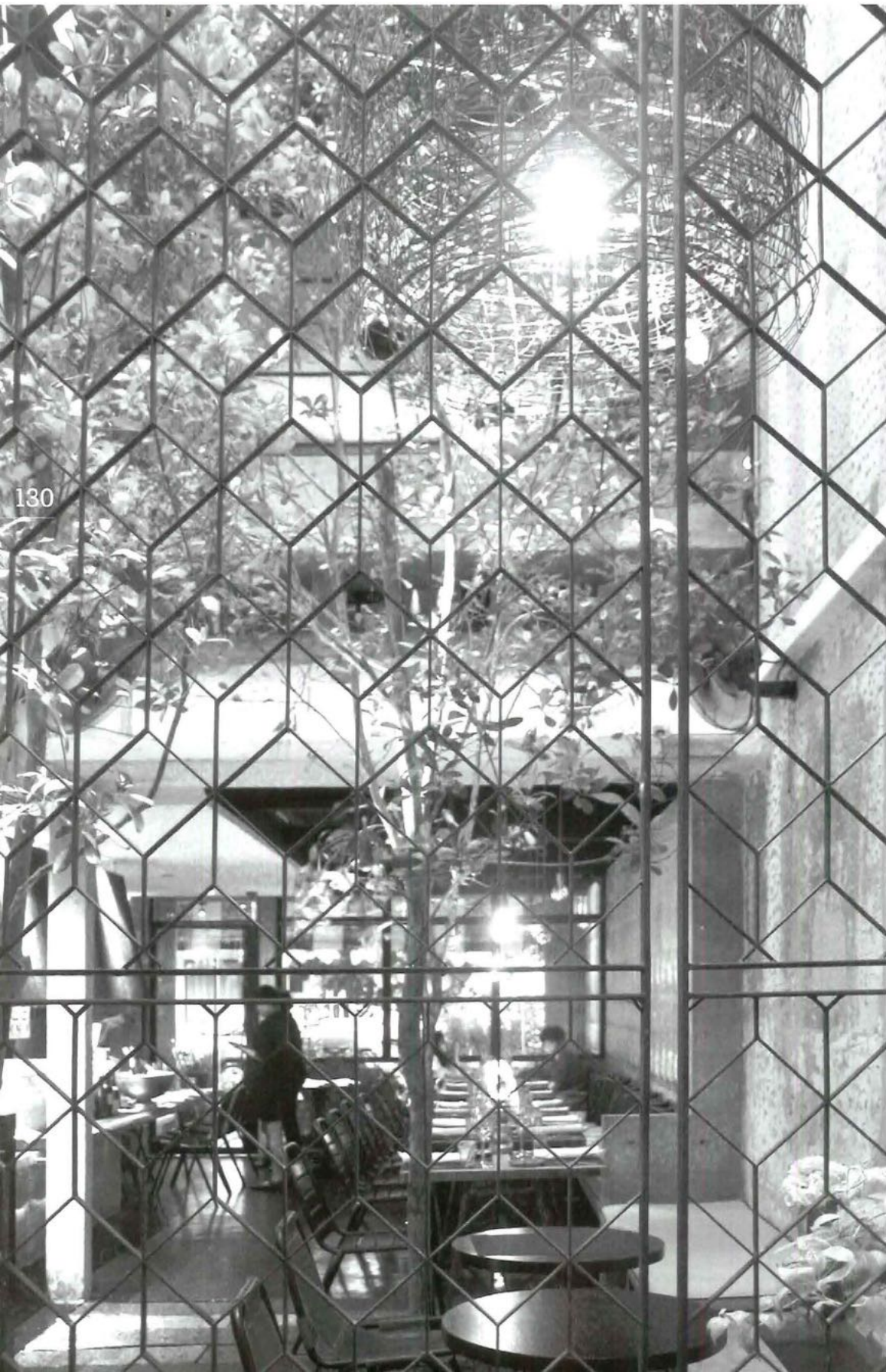


ROOF PLAN

hit & mrs

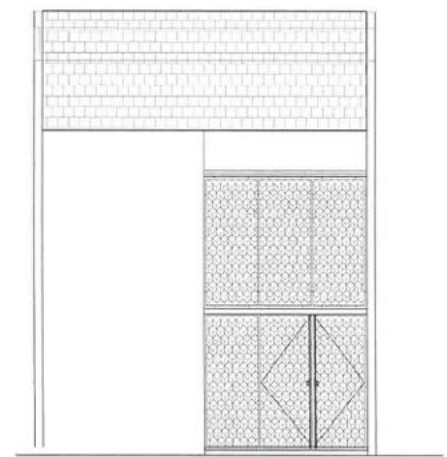
PHOTOGRAPHY BY LOO JIE HSIN

client Ben's Kitchens Sdn Bhd
project team Farah Azizan & Adela Askandar
main contractor Sweet Time Interior Decor
built area 1,750ft²
completion 2012

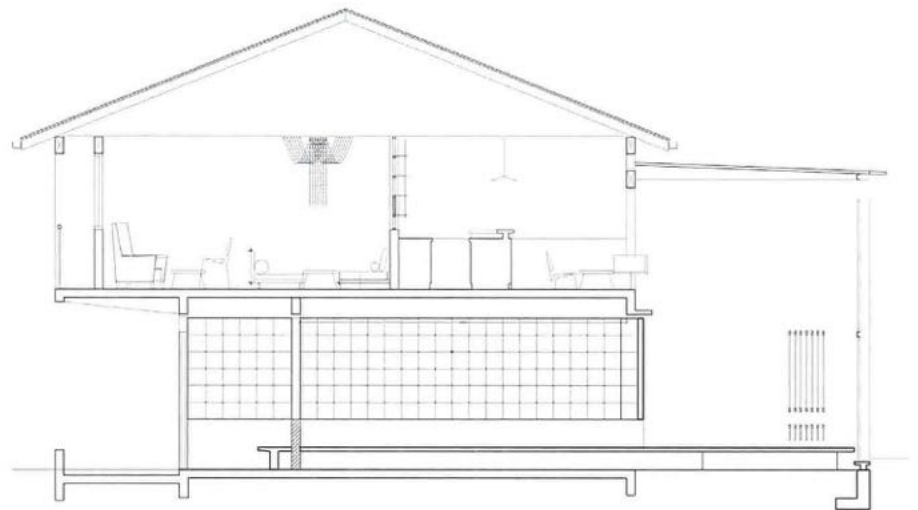




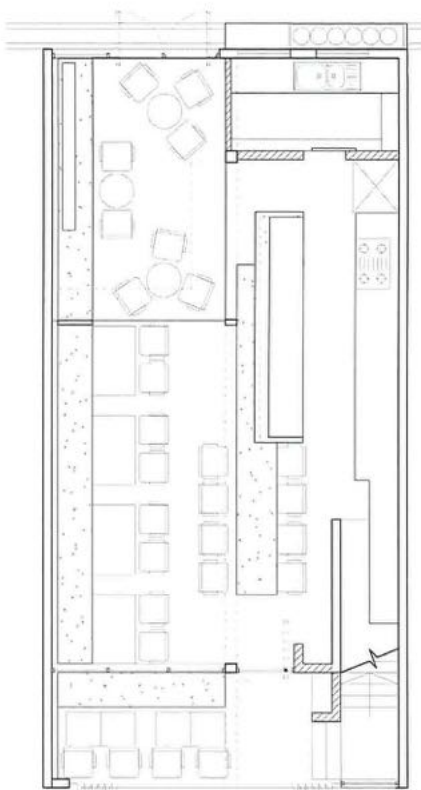
FRONT ELEVATION



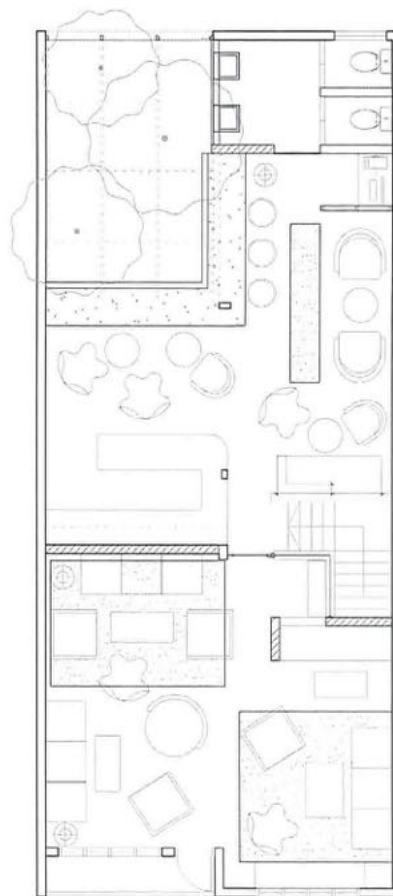
REAR ELEVATION



SECTION



GROUND FLOOR PLAN



FIRST FLOOR PLAN

Hit & Mrs is located in a two-storey, 1950s terraced commercial shoplot area in Bangsar. In essence, the client's brief called for a chic restaurant downstairs and a more laidback cocktail lounge upstairs. The rear portion was gutted to re-create the original airwell to allow for light and natural ventilation for both floors. The small restaurant of 30-pax capacity has an open kitchen, allowing the diner the intimate view of the chef preparing their meal. An experiment with casting concrete insitu using fabric membrane successfully transformed the main, bare wall into an interesting feature. The interior is kept rather austere to contrast with the experimental and colourful cuisine served. Upstairs in the lounge area, we had envisioned a bar and lounge that harks back to the neighbourhood's days of glory with references to the 50s era. This was epitomised in the borderline-kitschy but fabulous banana plantation wallpaper sourced from the Beverly Hills Hotel, set against the locally sourced vintage and rattan furniture in the lounge areas. A bespoke built-in teak-panelled bar counter and a feature glass bottle wall allows customers in air-conditioned the lounge area to glimpse through to the bar action.